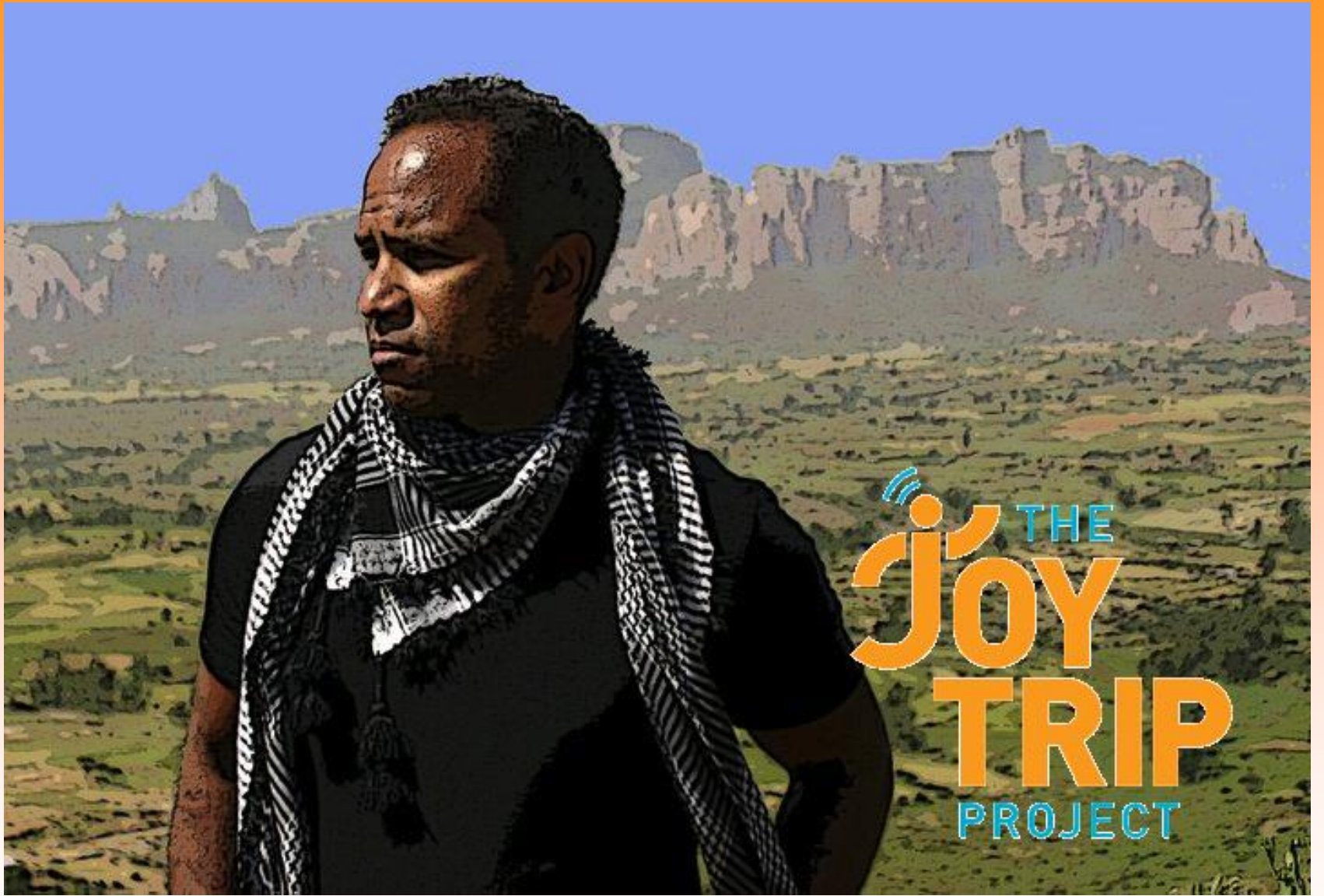




THE  
**JOY**  
**TRIP**  
PROJECT



THE  
**JOY**  
**TRIP**  
PROJECT



# THE JOY TRIP PROJECT

Reporting on the business, art and culture of the sustainable active lifestyle

[Home](#) [About](#) [Musicians](#) [Photogs](#)



The Joy Trip Project on Facebook

You like this. [Unlike](#)

1,269 people like The Joy Trip Project



Michael Bryan Sara



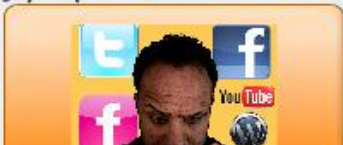
The Joy Trip Project on Facebook



Flickr Photos



Joy Trip Tweets



Oct 25 2010

## Assignment Earth: Zombie Subdivisions

Posted by [Joytripproject](#) in [Assignment Earth](#), [Environmental Journalism](#)



Fall-out from the housing market bubble isn't just affecting the suburbs of major metropolitan areas. Rural communities throughout the Rocky Mountain west are suffering too. Teton County Idaho with a population of fewer than 10,000 now has an astonishing 7,000 vacant lots, rural farms now converted to cul-de-sacs to nowhere. It's a surplus some say could take anywhere from 70 to nearly 300 years to build out even if the economy picks up.

"It really looks like a wasteland. Its blight and we have zombie sub-divisions just like this all over our valley," said Anna Trentadue of Valley Advocates for Responsible Development. "And some of them appear to be in some of our most sensitive habitat areas."

Trentadue works for a non profit that deals with growth. With a diminished market making it tough for developers to finish what they started, here the group is ceasing an opportunity to try to reshape rural development. The hope is to avoid building on all the vacant lots which would create sprawl, a development pattern that's expensive for tax payers who maintain the roads bridges and school bus routes that serve these far flung sub divisions. The group also aims to

Search



The Joy Trip Project Ap for iPhone



Thanks to our sponsors

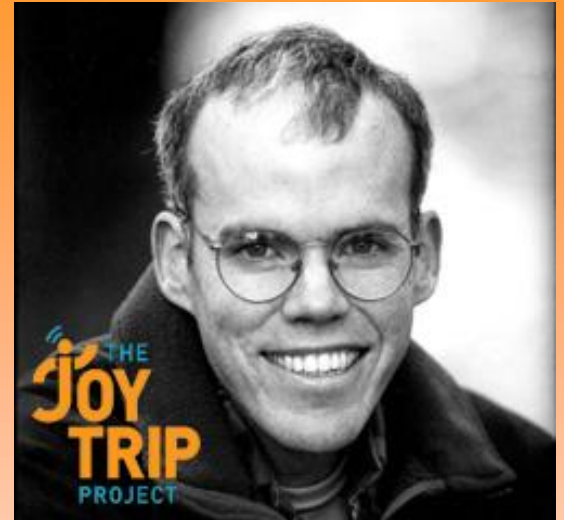


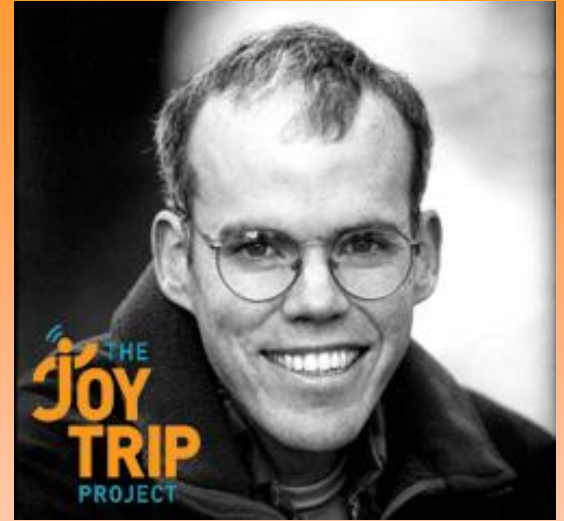


# Finding Beauty in a Broken World

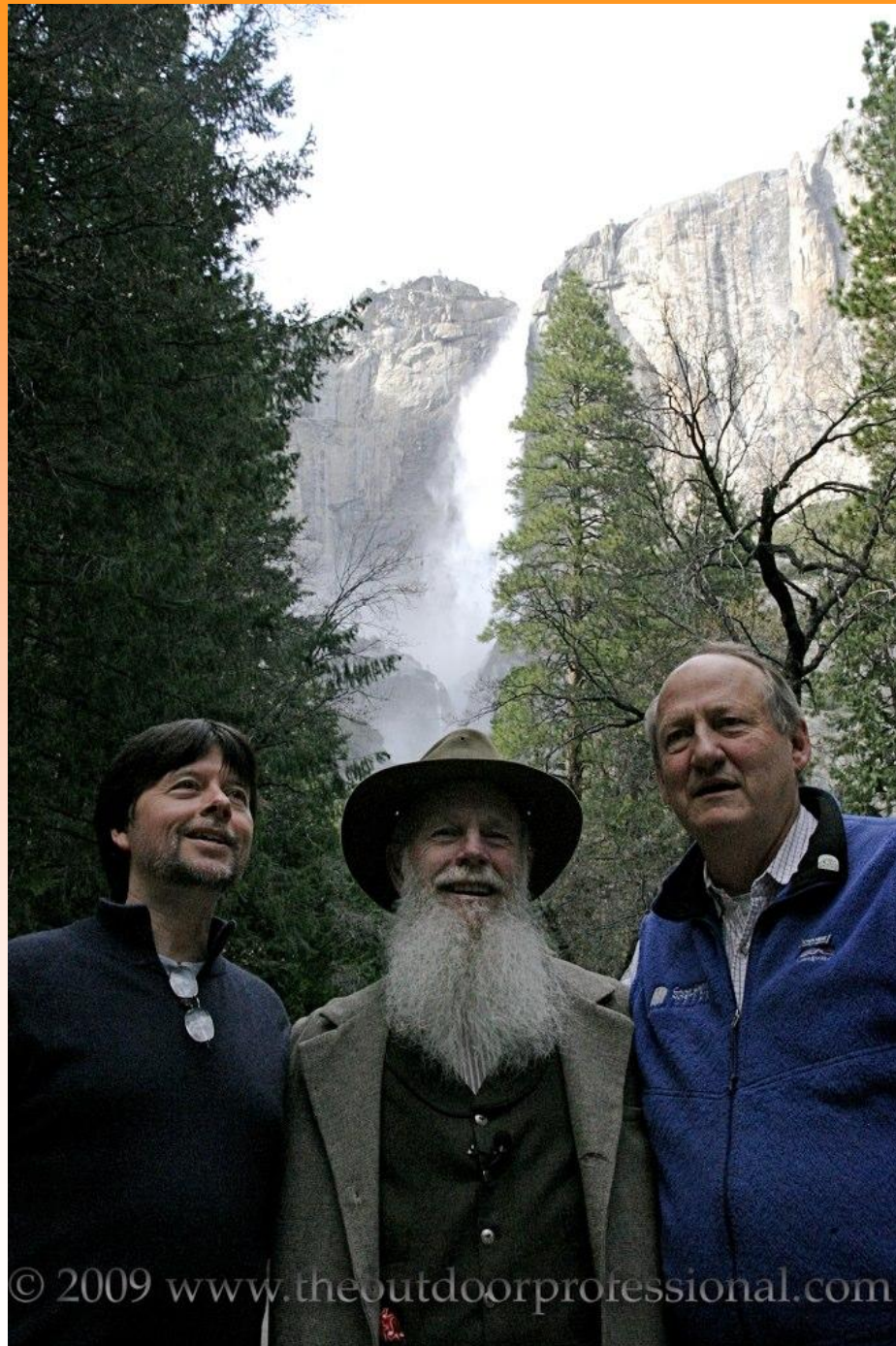












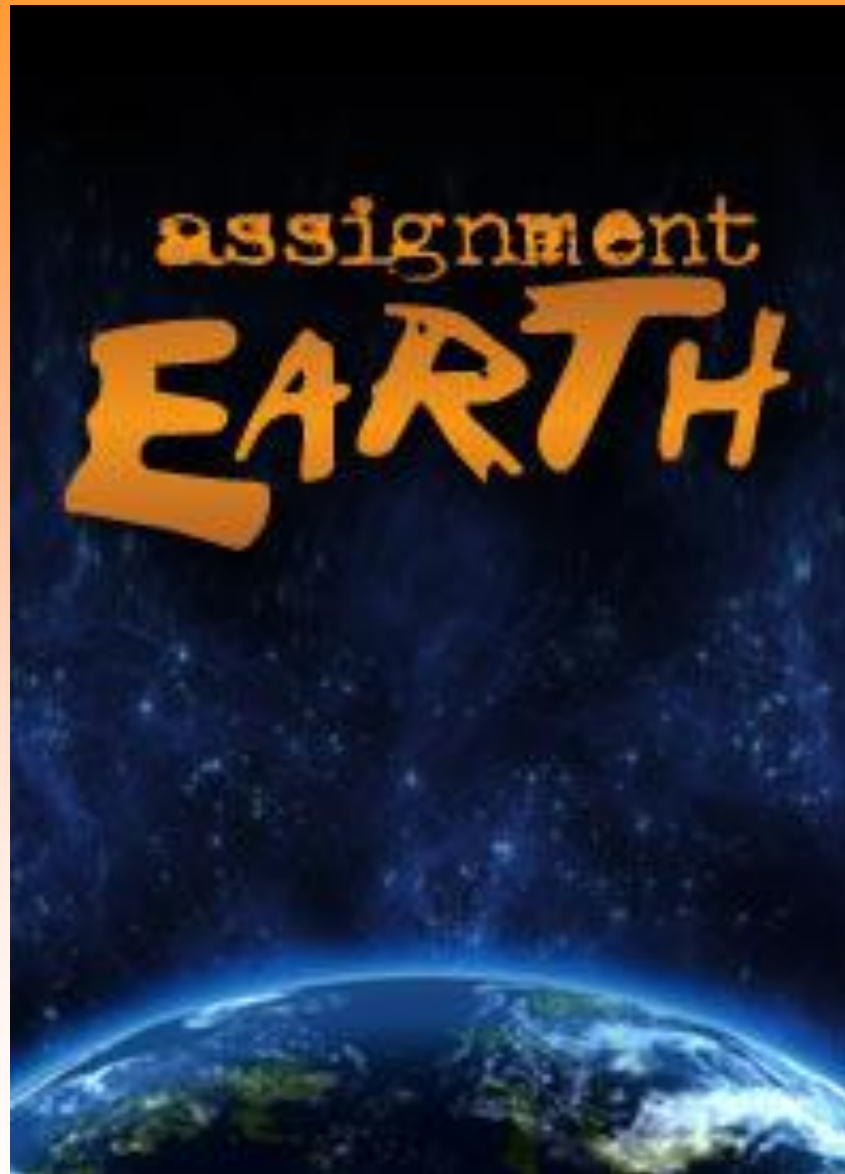
© 2009 [www.theoutdoorprofessional.com](http://www.theoutdoorprofessional.com)





QuickTime™ and a decompressor are needed to see this picture.







Atsemba Primary School



imagine1day

Inaugurated by the imagine1day team

March 4, 2010





