



# Where are the green jobs in Wisconsin?

By Mark Hanson LEED AP

Nelson Institute

October 5, 2010

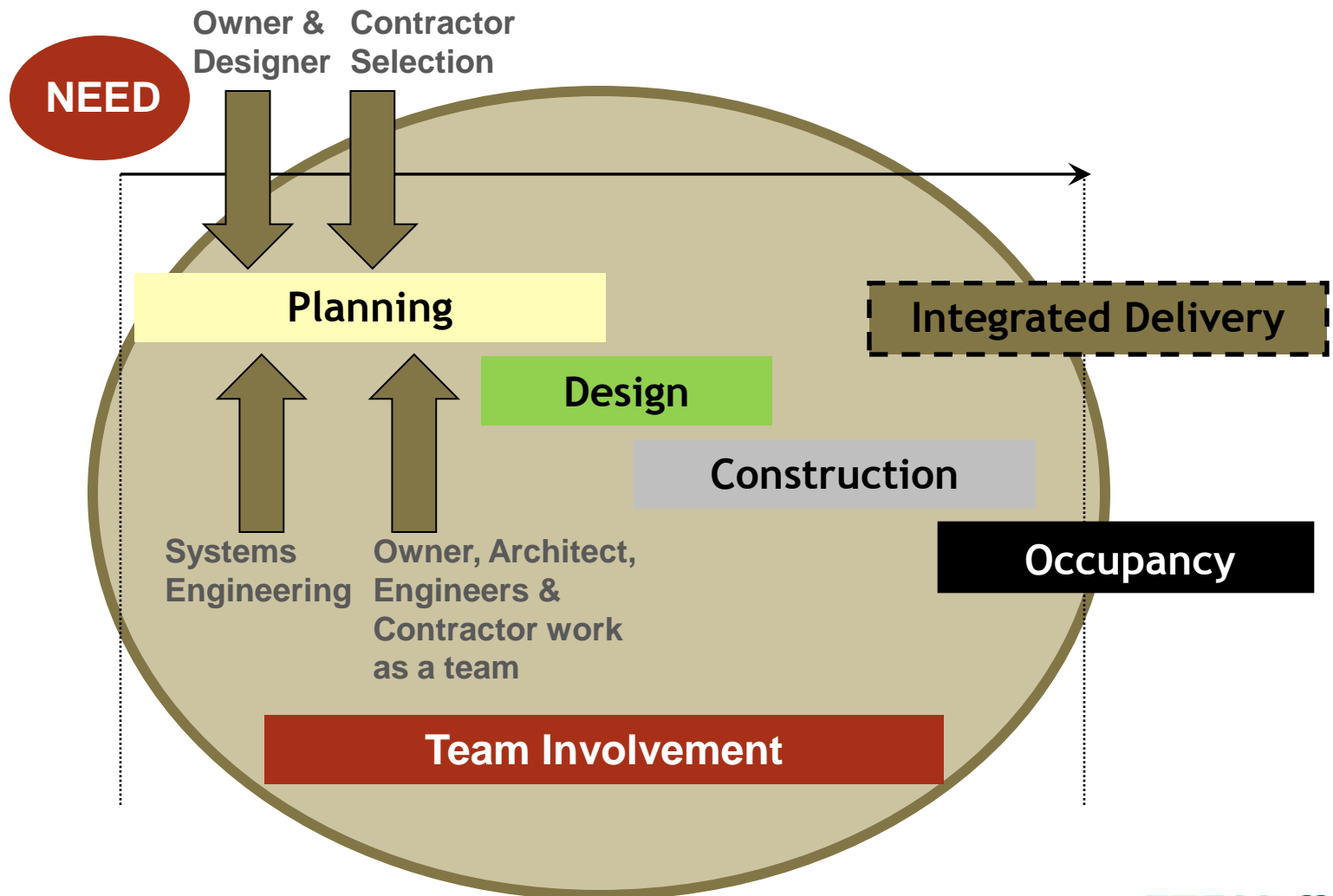
# Who We Are: Hoffman's Mission

- **We** make a **positive impact** on **people's lives** and their **environment** by providing **creative ideas** and **responsible solutions**.

mission established | 1994



# Project Delivery: Sustainable Build Process



# Forming a Partnership

- Integrated project design & delivery team



# Green Projects Support Green Jobs

- Holy Wisdom Monastery



# High Performance Windows Support Green Jobs

- Reduce/eliminate glare
- No need for interior or exterior shading devices
- Provide unobstructed views
- Reduce heat loss/heat gain
- Save money!



# Energy Efficiency and PV Support Green Jobs



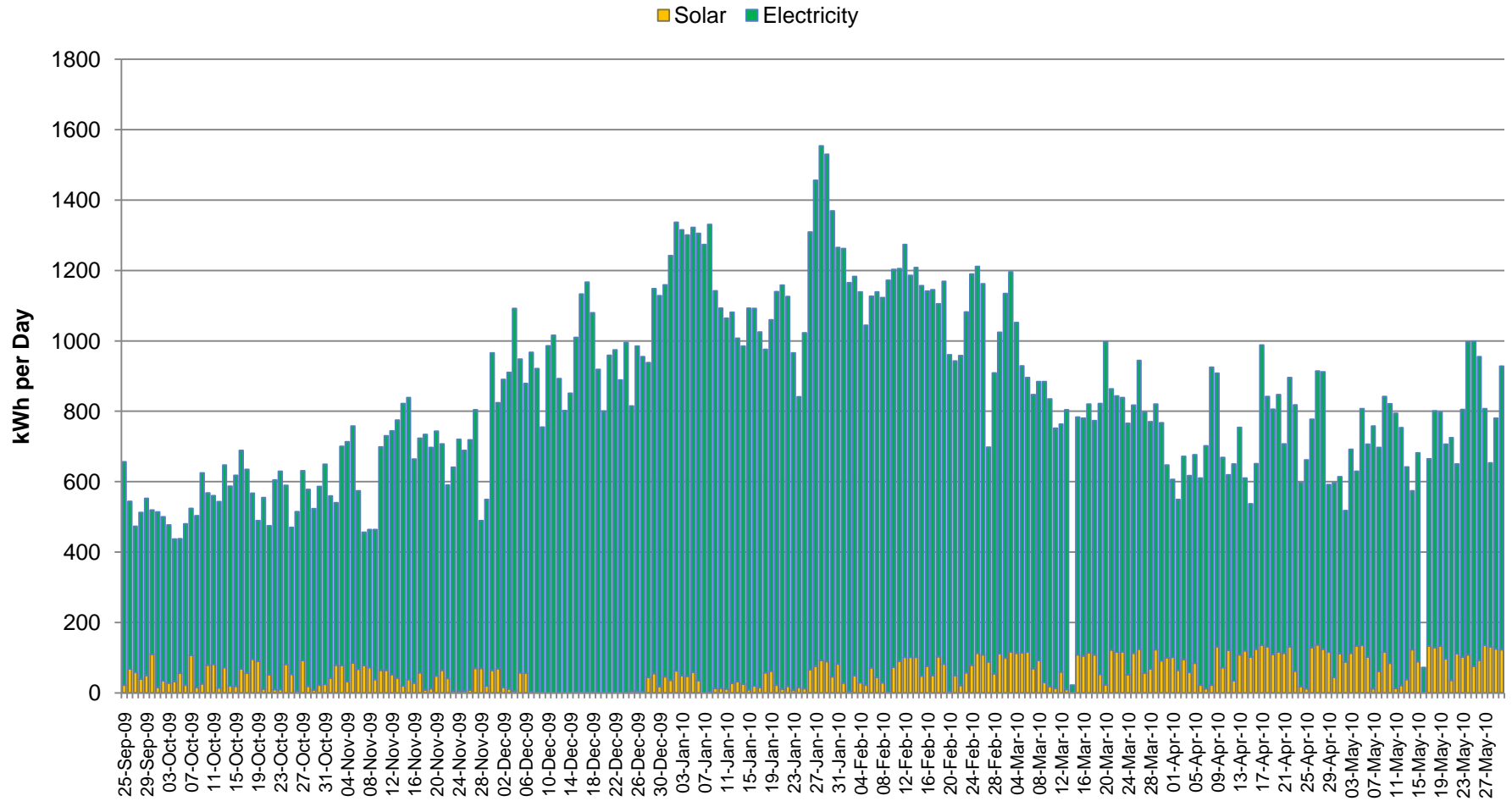
# Phase 1: 20 kW Photovoltaic System



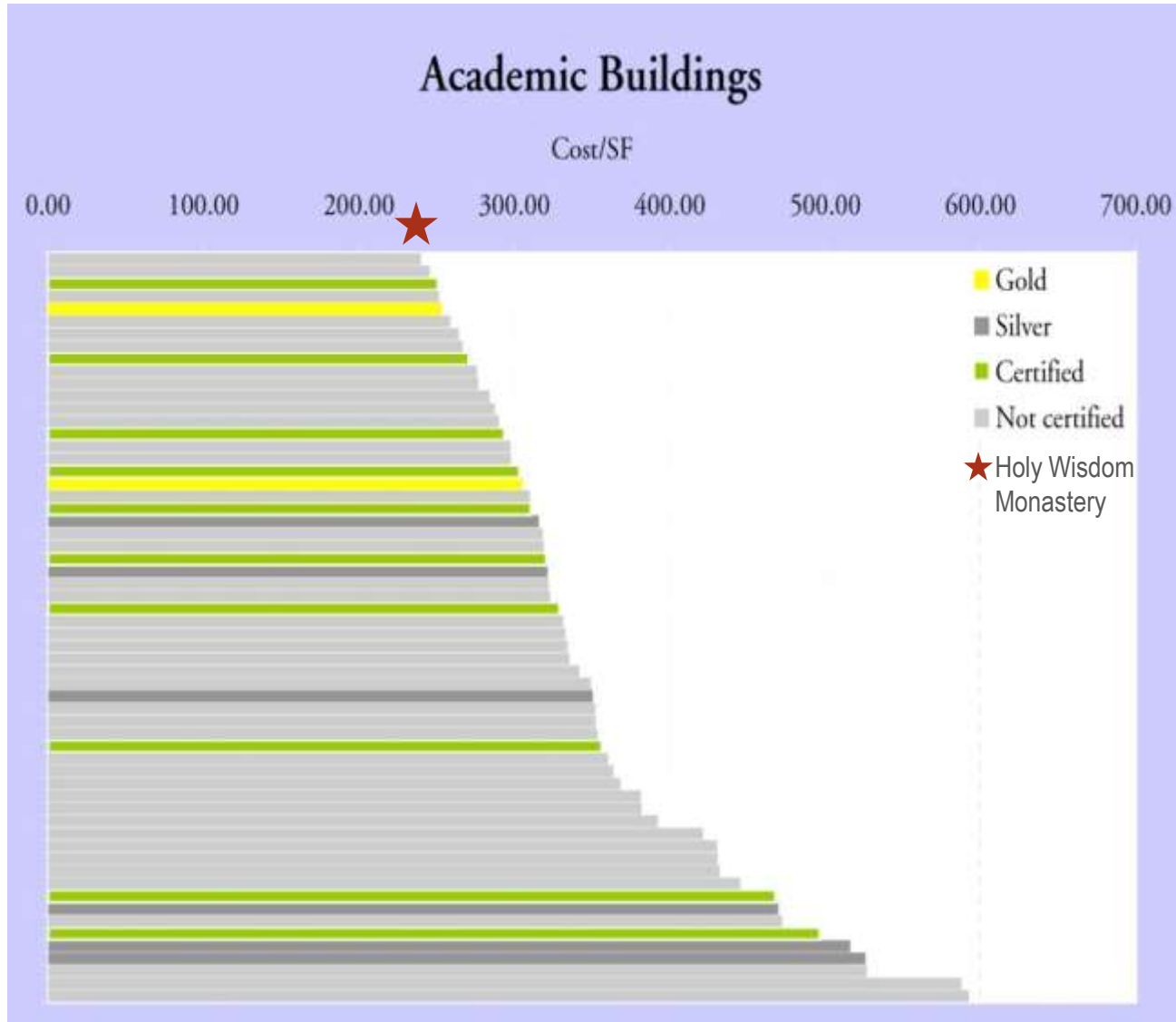


# Holy Wisdom Monastery During Initial Operation

## Building Electricity 9/25/2009 to 5/31/2010



# Mattiessen and Morris Study (construction cost)



# A Pathway to Zero Net Energy Projects

- Ask for green at conventional cost or less
- Contract for integrated project delivery and work as a team
- Inform decisions with evidence, including energy modeling, and apply three decision criteria
- Get as close to zero net energy as budget allows with possible phasing
- Follow a practical commissioning process
- Ensure building performs as intended
- Share experience to build confidence in the market place for sustainable projects

# Where are the green jobs?

- New (old) green jobs (maybe 20%)
  - Wind
  - Solar
  - Sustainable landscapes
- Old (new) green jobs (maybe 80%)
  - Building industry design, engineering, and construction
  - Supply chain, e.g.:
    - Andersen Windows
    - Orion and Ruud lighting
    - Johnson Controls
    - RenewAire
    - Marshfield doors

# Leadership on the Frontiers of Sustainability

*"Never doubt that a small group of thoughtful, committed people can change the world. Indeed, it is the only thing that ever has." - Margaret Mead.*



# Questions?

- Mark Hanson LEED AP
  - [mhanson@hoffman.net](mailto:mhanson@hoffman.net)
- Hoffman LLC
  - [www.hoffman.net](http://www.hoffman.net)
  - 800.236.2370